

GET FLOOR



COLORED BODY PORCELAIN STONEWARE

SIZE RANGE

11 3/4" x 23 5/8"

THICKNESS
9 mm

SURFACES

Matte

550050000081 LEAFLET GET

550050000073 BINDER GET FLOOR

600010000915 GET ACU MOKA 12X24pcs.0,0833
 600010000913 GET ACU GREIGE 12X24pcs.0,0833
 600010000913 GET ACU ALMOND 12X24pcs.0,0833

PRODUCT BOARDS



BOARD 25 5/8" x 31 1/2"

550040000045 BOARD GET FLOOR 25,6X31,5

600010000915 GET ACU MOKA 12X24pcs.0,5
 600010000913 GET ACU GREIGE 12X24pcs.1,0
 600010000913 GET ACU ALMOND 12X24pcs.0,5



BOARD 25 5/8" x 31 1/2"

BACK

SAMPLING BOX and CHIP



SAMPLING BOX

550060000015 SAMPLING BOX GET 12X24 4PCS

- 600010000915 GET ACU MOKA 12X24pcs.1
- 600010000913 GET ACU GREIGE 12X24pcs.1
- 600010000913 GET ACU ALMOND 12X24pcs.1

Sampling Box contains 1 piece for each color, in 12"x24" with Colored Visual Sticker.

CHIP

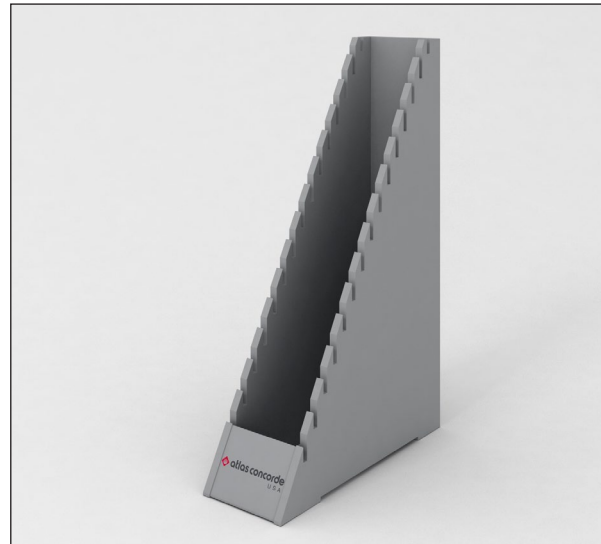
- 550040000078 CHIP.GET ALMOND 4X4 pcs.1
- 550040000079 CHIP.GET GREIGE 4X4 pcs.1
- 550040000080 CHIP.GET MOKA 4X4 pcs.1



GET FLOOR



GENERIC DISPLAY



55006000010 GENERIC CULLA 10PCS
10 slots, 24" wide
Recommended to be used with Sampling Boxes or Product Boards

55006000011 WATERFALL CULLA 15PCS.
15 slots
Recommended to be used with Sampling Boxes (12"x24" tiles)



55003000036 WING RACK DISPLAY
12 wings, 4 slots each. Total capacity: 48 boards
Recommended to be used with Product Boards (Floor, Wall) and Visual Boards
Central visual panel with magnetic fasteners.

VISUAL BOARDS



VISUAL BOARD FOR WING RACK

- 550040000064** BOARD VISUAL SIGN+GET 25,6X31,5

- 550040000053** BOARD VISUAL REDEEM 25,6X31,5
- 550040000038** BOARD FRAY FLOOR 25,6X31,5
- 550040000062** BOARD VISUAL RIDGE+PATH 25,6X31,5
- 550040000058** BOARD VISUAL RIDGE 25,6X31,5
- 550040000034** BOARD FORGE FLOOR 25,6X31,5
- 550040000044** BOARD VISUAL FRAY+FORGE 25,6X31,5
- 550040000027** BOARD VISUAL EON 25,6X31,5
- 550040000046** BOARD VISUAL MIX 1 25,6X31,5
- 550040000047** BOARD VISUAL MIX 2 25,6X31,5

10 Visual Boards, with single or multiple collection images
Recommended to be used with Wing Rack, to fill empty wings