

# SIGN FLOOR



COLORED BODY PORCELAIN STONEWARE

SIZE RANGE

11 3/4" x 23 5/8"

THICKNESS  
9 mm

**SURFACES**

Matte, slightly structured

**550050000086** LEAFLET SIGN

**550050000074** BINDER SIGN FLOOR

- 600010000928 SIGN ACU WHITE 12X24 .....pcs.0,0833
- 600010000926 SIGN ACU CREAM 12X24 .....pcs.0,0833
- 600010000927 SIGN ACU GREIGE 12X24.....pcs.0,0833

## PRODUCT BOARDS



BOARD 25 5/8" x 31 1/2"

**550040000063** BOARD SIGN FLOOR 25,6X31,5

- 600010000928 SIGN ACU WHITE 12X24 .....pcs.0,25
- 600010000926 SIGN ACU CREAM 12X24 .....pcs.1,00
- 600010000927 SIGN ACU GREIGE 12X24.....pcs.0,25
- 600110000244 SIGN ACU CREAM MOS. 12X12 ...pcs.0,50



BOARD 25 5/8" x 31 1/2"

**BACK**

# SIGN FLOOR



## SAMPLING BOX and CHIP



### SAMPLING BOX

**550060000020** SAMPLING BOX SIGN 12X24 3PCS

- 600010000928 SIGN ACU WHITE 12X24 .....pcs.1
- 600010000926 SIGN ACU CREAM 12X24 .....pcs.1
- 600010000927 SIGN ACU GREIGE 12X24.....pcs.1

Sampling Box contains 1 piece for each color, in 12"x24" with Colored Visual Sticker.

### CHIP

- 550040000097 CHIP.SIGN WHITE 4X4..... pcs.1
- 550040000095 CHIP.SIGN CREAM 4X4..... pcs.1
- 550040000096 CHIP.SIGN GREIGE 4X4 ..... pcs.1

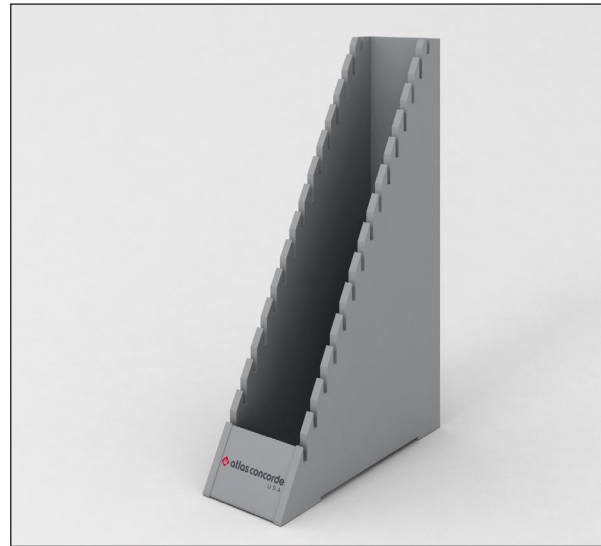


# SIGN FLOOR

## GENERIC DISPLAY



**55006000010** GENERIC CULLA 10PCS  
10 slots, 24" wide  
Recommended to be used with Sampling Boxes or Product Boards



**55006000011** WATERFALL CULLA 15PCS  
15 slots  
Recommended to be used with Sampling Boxes (12"x24" tiles)



**55003000036** WING RACK DISPLAY  
12 wings, 4 slots each. Total capacity: 48 boards  
Recommended to be used with Product Boards (Floor, Wall) and Visual Boards  
Central visual panel with magnetic fasteners.

# SIGN FLOOR

## VISUAL BOARDS



### VISUAL BOARD FOR WING RACK

- 550040000064** BOARD VISUAL SIGN+GET 25,6X31,5
  
- 550040000053** BOARD VISUAL REDEEM 25,6X31,5
- 550040000038** BOARD FRAY FLOOR 25,6X31,5
- 550040000062** BOARD VISUAL RIDGE+PATH 25,6X31,5
- 550040000058** BOARD VISUAL RIDGE 25,6X31,5
- 550040000034** BOARD FORGE FLOOR 25,6X31,5
- 550040000044** BOARD VISUAL FRAY+FORGE 25,6X31,5
- 550040000027** BOARD VISUAL EON 25,6X31,5
- 550040000046** BOARD VISUAL MIX 1 25,6X31,5
- 550040000047** BOARD VISUAL MIX 2 25,6X31,5

10 Visual Boards, with single or multiple collection images  
Recommended to be used with Wing Rack, to fill empty wings